

# Loe Beach Regatta - Saturday 1st July 2023 - Sailing Instructions (SIs)

## Abbreviations:

[NP] - Means that a boat may not protest another boat for breaking that rule.  
This changes RRS 60.1(a).

[DP] - Rules for which penalties are at the discretion of the Protest Committee

## 1 RULES

1.1 The event is governed by the rules as defined in *The Racing Rules of Sailing (RRS)*.

1.2 The respective class associations of the Falmouth Working Boats, the Falmouth Gaffers, the St Mawes One Designs and the Shrimper 19s (Falmouth area) agree that for the purposes of the definition of "Start" and "Finish" and rules 21.1, 29.1, 30 and 44.2 of the RRS (but not any other rules) the term "hull" includes a boat's bowsprit in its normal position.

1.3 Other changes are described in the relevant Sailing Instruction.

## 2 CHANGES TO SAILING INSTRUCTIONS

2.1 Notices to competitors and Changes to Sailing Instructions will be posted on the [www.loebeachregatta.com](http://www.loebeachregatta.com) website. Any changes to sailing instructions will be posted by 1300 on Regatta day.

## 3 COMMUNICATIONS WITH COMPETITORS

3.1 The Race Committee may use VHF channel 72 to transmit course and race start information. The countdown, postponement, general and individual recalls and boats on course side in the minute before the start may also be broadcast on channel 72. From the time of the first course broadcast to the completed start of the last class to start no boat shall broadcast on channel 72 or 77 other than for reasons of an emergency requiring immediate assistance. The Race Committee may use WhatsApp to alert competitors to notices. The link to the WhatsApp group is <https://chat.whatsapp.com/Jqs1ro1HISJH7qpQzIgcml> and a QR code is shown on the Notice of Race and Entry Form.

3.2 There is no onshore race office and there will be no signals made ashore.

## 4 CODE OF CONDUCT

4.1 [DP] Competitors and support persons shall comply with reasonable requests from race officials.

## 5 SCHEDULE OF RACES

5.1

Start Time	Class Flag	Class	Course
1400	B	Large Working Boats	A
1405	C	Small Working Boats	A
1410	A	IRC – 0.856 and above	A
1410	E	YTC – 1050 and below	A
1415	V	Sunbeams	B
1420	U	YTC – 1051 and above	B
1425	T	Dinghies PY 1099 & Below	B
1430	W	Ajax and other fixed keel day boats	B
1435	R	Dinghies PY 1100 and above	B or C
1435	M	Mirror Dinghies	B or C
1440	G	Gaffers	B or C
1445	D	St Mawes One Design (SMOD)	B or C
1445	H	Shrimpers	B or C
1450	J	Junior Race (if sailed)	C*

\*A different course may be communicated verbally by their own Sailing School to the Junior Race competitors

5.2 The scheduled time of the warning signal for the first race each day is 1355.

5.3 To alert boats that a race or sequence of races will begin soon, the orange starting line flag will be displayed with one sound at least five minutes before a warning signal is made.

## 6 CLASS FLAGS

6.1 Class flags displayed at warning signals are shown in Table in SI 5.1

6.2 If there are insufficient entries in any class to support competitive racing, the Race Committee may allocate entries to other classes. If classes are adjusted in this way, entrants may continue to fly their entry class flag.

6.3 Class flags shall be flown from the backstay or mainsail leech **with the exception of dinghies and classes D, H, V and W**. Yachts are requested not to race with an ensign flying.

## 7 RACING AREA

7.1 The Racing Area is shown on the chartlet in Appendix A

7.2 Boats shall not race through any area where there are either moorings, or moored or anchored yachts

## 8 COURSES

8.1 Courses for each class are shown in the List Of Courses in Appendix A

8.2 Courses may be broadcast on Channel 72 and indicated by a numeral flag on the Committee Vessel. **For Classes R, M, G, D and H only**, a 'B' or 'C' flag may be flown beneath the numeral flag to further describe the Course

## 9 MARKS

- 9.1 Marks are described and approximate positions shown on the chartlet in Appendix A.

## 10 OBSTRUCTIONS

- 10.1 No boat shall pass between the Carick Carlys Rocks cardinal marks

- 10.2 Commercial vessels constricted by their draft or size form moving exclusion zones which competitors are to treat as obstructions. The exclusion zone extends to 100 metres on all sides of the vessel and includes tugs, pilot boats and safety boats escorting the vessel. No competitor is to enter the exclusion zone and if becalmed is to use their engine or other means of propulsion to move out of the way. This should only be sufficient to move out of the exclusion zone and the course steered and distance travelled should be the shortest distance to move the competitor clear of the commercial vessel and its exclusion zone. This changes RRS 42.

- 10.3 A 30 metre zone around a dive boat flying code flag A, an orange pillar mark indicating a diver beneath the surface and a diver on the surface are obstructions. A boat shall not enter the 30 metre zone.

- 10.4 Competitors who unnecessarily interfere with commercial shipping, divers, submerged divers, and dive boats bring the sport into disrepute and risk protest by the Race Committee. Any complaint by the harbour authority will automatically initiate a protest hearing.

## 11 THE START

- 11.1 Start times are listed in the Schedule Of Races above.

- 11.2 Start Line will be between a mast displaying an orange flag on a Committee Vessel within the Carrick Roads, and an orange buoy with an orange flag.

- 11.3 All boats shall keep clear of the start line until their warning signal has been made.

- 11.4 After rounding the first mark, boats shall not pass through the starting line.

- 11.5 Any boat for which an Entry Form is accepted that does not display a visible sail number will report to the Committee Vessel before the start (and after the finish) to confirm its identity.

- 11.6 RRS rule 26 is changed as follows. Preparatory flag will be raised 4 minutes before the first class start and lowered 1 minute before the last class start unless there is a change to starting penalties, in which case the Preparatory flag will be replaced for the relevant start, pursuant to RRS rule 30.

- 11.7 RRS rule 29.2 & the RRS flag definitions are changed as follows. Flag First Substitute will be displayed with two sound signals. First Substitute will be flown until all boats have returned but not later than 4 minutes after the Starting Signal whichever is earlier. The recalled class will start

after the last scheduled start. In the event of a General Recall for more than one class, the sequence of the starts of recalled classes will follow the start order detailed in these sailing instructions.

## 12 THE FINISH

- 12.1 No boat shall sail through the finish line unless she is finishing
- 12.2. The finishing line will be between a mast displaying a blue flag on a Committee Vessel and an orange buoy with an orange flag.
- 12.3. Any boat for which an Entry Form is accepted that does not display a visible sail number will report to the Committee Vessel after finishing to confirm its identity. [The finishing line is between staffs displaying blue flags on the finishing marks.
- 12.4 If the race committee is absent when a boat finishes, she shall report her finishing time, and her position in relation to nearby boats, to the race committee at the first reasonable opportunity.

## 13 PENALTY SYSTEM

- 13.1 RRS 44.1 is changed so that the Two-Turns Penalty is replaced by the One-Turn Penalty.

## 14 TIME LIMIT

- 14.1 Time limit for all races is 1700. If the first boat of a class finishes before 1700 an extension of 30 minutes will be given to other boats in that class.

## 15 HEARING REQUESTS

- 15.1 The protest time limit is 1900.
- 15.2 Protest forms are available from the Committee Vessel. Protests shall be delivered there within the protest time limit.
- 15.3 Protests will be heard at the Royal Cornwall Yacht Club at 7 pm on the Thursday following the regatta.

## 16 SAFETY REGULATIONS

- 16.1 [DP] A boat that retires from a race must notify the race committee within 30 minutes after finishing or retiring. Retirements may be reported to the race committee by radio on Channel 72 or by calling or SMS to the Race Officer directly on 07432 142 381.

## 17 PRIZES

- 17.1 Prizes will be awarded by the Regatta Committee as soon as practicable after the event at Loe Wall, TR3 6SH.

## 18 RISK STATEMENT

- 18.1 RRS 3 states: 'The responsibility for a boat's decision to participate in a race or to continue to race is hers alone.' By participating in this event each competitor agrees and acknowledges that sailing is a potentially

dangerous activity with inherent risks. These risks include strong winds and rough seas, sudden changes in weather, failure of equipment, boat handling errors, poor seamanship by other boats, loss of balance on an unstable platform and fatigue resulting in increased risk of injury.

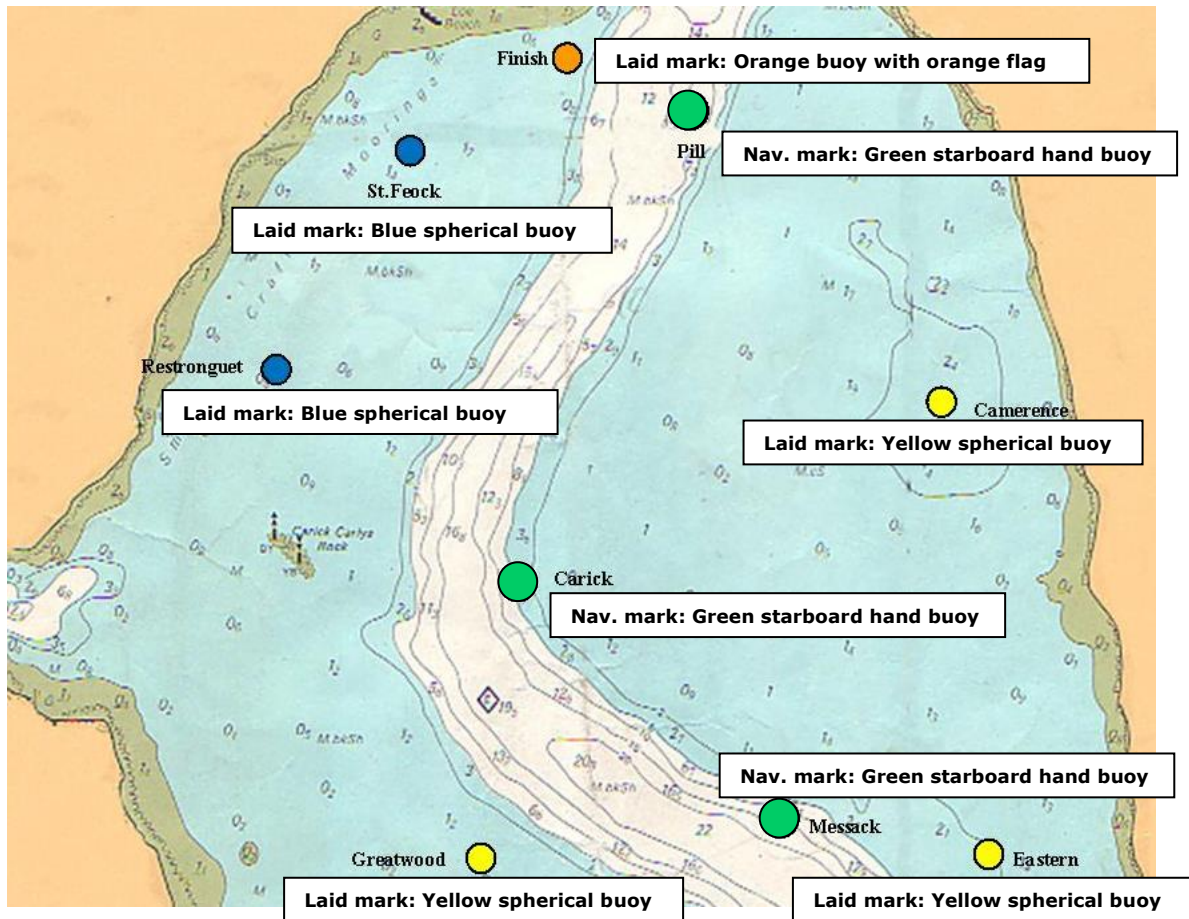
**Inherent in the sport of sailing is the risk of permanent, catastrophic injury or death by drowning, trauma, hypothermia or other causes.**

19 INSURANCE

- 19.1 Each participating boat shall be insured with valid third-party liability insurance with a minimum cover of £3,000,000 per incident or the equivalent.

# LOE BEACH REGATTA SAILING INSTRUCTIONS

## APPENDIX A: RACING MARKS AND COURSES



Chartlet reproduced by kind permission of the UK Hydrographic Office – **Not To Be Used For Navigation**  
Unused marks may not be laid. All positions are approximate.

<b>List of Courses – Chosen Course Number Signalled By Numeral Pennant on Committee Vessel</b>							
North Wind	N.W. Wind	West Wind	S.W. Wind	South Wind	S.E. Wind	East Wind	N.E. Wind
<b>Classes B, C, A &amp; E – Longer Courses "A" – All Marks To Port</b>							
<b>Course 1</b>	<b>Course 2</b>	<b>Course 3</b>	<b>Course 4</b>	<b>Course 5</b>	<b>Course 6</b>	<b>Course 7</b>	<b>Course 8</b>
Pill	St Feock	Restronguet	Greatwood	Greatwood	Messack	Camerence	Camerence
St Feock	Eastern	Greatwood	Camerence	Messack	Eastern	Restronguet	Greatwood
Greatwood	St Feock	Eastern	Pill	Pill	St Feock	Greatwood	Eastern
Messack	Eastern	Greatwood	Restronguet	St. Feock	Messack	Eastern	Camerence
Pill	St Feock	Eastern	Greatwood	Greatwood	Eastern	Greatwood	Pill
St Feock	Eastern	Camerence	Camerence	Messack	St Feock	Eastern	Restronguet
Greatwood	Pill	Restronguet	Greatwood	Pill	Messack	Camerence	Greatwood
Messack	Finish	Camerence	Camerence	St. Feock	Eastern	Restronguet	Camerence
Pill		Restronguet	Greatwood	Greatwood	Camerence	Camerence	Greatwood
St Feock		Camerence	Camerence	Eastern	Pill	Pill	Camerence
Greatwood		Pill	Pill	Camerence	Finish	Finish	Pill
Messack		Finish	Finish	Pill			Finish
Pill				Finish			
Finish							
<b>Classes V, O, U, O, T &amp; W (and R, D, G and H in fresher winds) Medium Courses "B" – All Marks To Port</b>							
<b>Course 1</b>	<b>Course 2</b>	<b>Course 3</b>	<b>Course 4</b>	<b>Course 5</b>	<b>Course 6</b>	<b>Course 7</b>	<b>Course 8</b>
Pill	St Feock	Restronguet	Greatwood	Greatwood	Messack	Camerence	Camerence
St Feock	Messack	Greatwood	Camerence	Messack	Eastern	Restronguet	Greatwood
Carick	St Feock	Eastern	Pill	Pill	St Feock	Greatwood	Eastern
Camerence	Carick	Camerence	Restronguet	St. Feock	Messack	Eastern	Camerence
Pill	Camerence	Restronguet	Greatwood	Greatwood	Eastern	Camerence	Pill
St Feock	Pill	Camerence	Camerence	Messack	Camerence	Pill	Restronguet
Carick	Finish	Pill	Pill	Pill	Pill	Finish	Carick
Pill		Finish	Finish	Finish	Finish		Pill
Finish							Finish
<b>Classes R, D, G, H in lighter winds &amp; J- Shorter Courses "C" – All Marks To Port</b>							
<b>Course 1</b>	<b>Course 2</b>	<b>Course 3</b>	<b>Course 4</b>	<b>Course 5</b>	<b>Course 6</b>	<b>Course 7</b>	<b>Course 8</b>
Pill	St Feock	Restronguet	Greatwood	Greatwood	Messack	Camerence	Camerence
St Feock	Messack	Carick	Eastern	Carick	Eastern	St Feock	Carick
Carick	Camerence	Camerence	Camerence	Greatwood	Camerence	Pill	Camerence
Camerence	Pill	Pill	Pill	Camerence	Pill	St Feock	Pill
Pill	Finish	Finish	Finish	Pill	Finish	Pill	Finish
Finish				Finish		Finish	